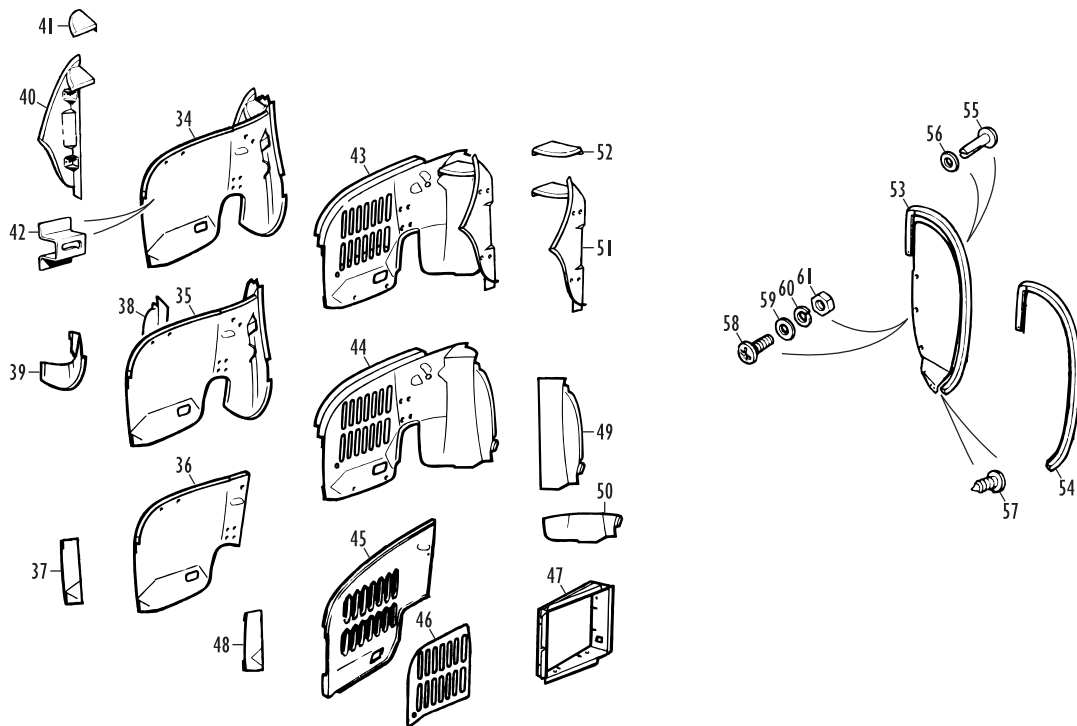
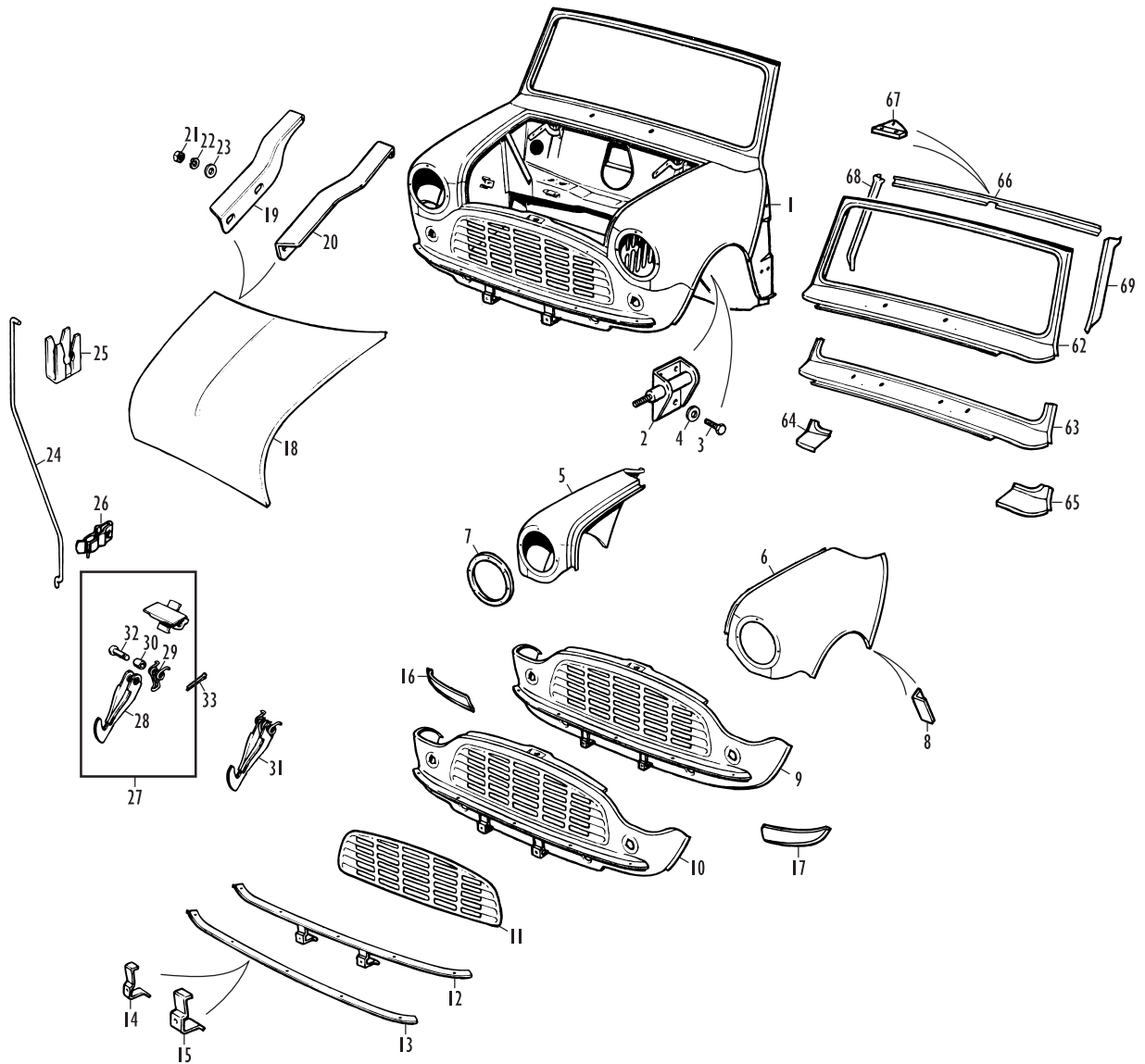


Front End Panels - Van and Pick Up



Front End Panels - Van and Pick Up

No.	Part No.	Description	Qty.	Remarks
Front End Assembly				
1	14A8202	FRONT END ASSEMBLY	1	1961-64; without brake cooling cutouts on front panel lower corners.
	ALA8468	FRONT END ASSEMBLY	1	1964-70; with brake cooling cutouts on front panel lower corners. With inboard bonnet hinges.
	ALA8614	FRONT END ASSEMBLY	1	1970-75; with outboard bonnet hinges. Solid subframe mountings.
	ALA8620	FRONT END ASSEMBLY	1	1976 on; rubber subframe mountings.

For details of the dash included in a front end assembly, please refer to the Dash Assembly section.

2	21A471	BRACKET ASSY., front shock absorber, RH	1	
	21A474	BRACKET ASSY., front shock absorber, LH	1	
3	SH604051	SCREW, bracket attaching	8	
4	LWZ204	WASHER, locking	8	

Front Wings, Front Panel and Bonnet

5	14A7240	FRONT WING, RH	1	With original round headlamp ring.
	14A6476	FRONT WING, RH	1	With later egg-shaped headlamp ring.
	14A6476P	FRONT WING, RH	1	Non-genuine.
6	14A7241	FRONT WING, LH	1	With original round headlamp ring.
	14A6477	FRONT WING, LH	1	With later egg-shaped headlamp ring.
	14A6477P	FRONT WING, LH	1	Non-genuine.
7	14A6693	MOUNTING RING, round, headlamp	2	Included in wing assemblies.

For an explanation of the different shaped headlamp rings, see 'Front End Panels - Saloon and Cabriolet 1969 On'. Incidentally, the factory presswork material planners years ago were very clever with the design of manufacture of the older, round, headlamp ring. In pressing a Mini rear quarter panel (rear wing), two relief holes had to be punched in the rear quarter window area to make the forming of the quarter window depression easier. The two 'scrap' discs of steel punched out were designed to each be the same diameter as the disc required to make the headlamp ring - so from each new rear quarter panel, two headlamp rings were also achieved! This was not a unique occurrence in Mini panel production; there were in fact many other instances of ostensibly scrap material, or 'salvage' as it was termed, being reused for other panels or brackets.

8	14A7602	SUPPORT ANGLE, wing to A panel	2	
9	14A6480	FRONT PANEL ASSEMBLY	1	1961-64; without brake cooling cutouts on lower corners.
10	14A9507	FRONT PANEL ASSEMBLY	1	1964-75; with brake cooling cutouts on lower corners. Solid subframe mountings.
	14A9507P	FRONT PANEL ASSEMBLY	1	1964-75; non-genuine.
	AAM1106	FRONT PANEL ASSEMBLY	1	1976 on; rubber subframe mountings.
11	REPANO22	RADIATOR GRILLE INSERT, front panel	1	Converts saloon front panel to van and pick up type.

If you fancy an easier time when servicing your Van or Pick Up, fitting a Saloon front panel assembly is for you - it allows for fitment of a Saloon radiator grille, with the obvious benefit of that grille being removable (unlike the Van and Pick Up original) when the time comes to service the distributor or carry out other work on the front of the engine. If you want original appearance but with the practicality of a removable grille, the REPANO22 Van and Pick Up style grille insert shown above can be simply screwed in place, rather than welded, on a Saloon front panel. If you intend to do this, it's advisable to clip a length of small-sectioned plastic beading around the edge of the insert before you screw it to the car - that way the insert won't damage the paintwork on the front panel.

12	14A7242	ANGLE ASSY., bumper and no. plate	1	Included in front panel assembly.
13	BMP103	ANGLE, front bumper securing	1	Included in front panel assembly.
14	REPANO24	BRACKET, no. plate securing	2	Included in 14A6480 front panel assembly; early narrow design.
15	14A8456	BRACKET, number plate securing	2	Included in 14A9507 and AAM1106 front panel assembly; later wide design.
16	REPANO28	CONVERSION PANEL, lower corner, RH	1	
17	REPANO27	CONVERSION PANEL, lower corner, LH	1	

These conversion panels modify the lower corners of a post-1964 front panel back to pre-1964 condition, without brake cooling cutouts.

18	24A1182	BONNET ASSEMBLY	1	1961-70.
	ALA8430	BONNET ASSEMBLY	1	1970 on.
19	14A6714	BRACKET, bonnet hinge, RH	1	Included in 24A1182 bonnet assembly.
20	14A6715	BRACKET, bonnet hinge, LH	1	Included in 24A1182 bonnet assembly.
21	NH604041	NUT, hinge to bonnet	4	
22	LWZ204	WASHER, locking	4	
23	PWZ104	WASHER, plain	4	
24	24A857	ROD, bonnet prop	1	
25	24A859	CLIP, prop rod pivot	1	
26	CZH209	CLIP, prop rod stowage	1	Included in ALA8430 bonnet assembly.

27	ALA7608	SAFETY CATCH AND BRACKET ASSY.	1	Includes hook, spring, distance piece, clevis pin.
28	4B8644	HOOK, safety catch	1	
29	14A6838	SPRING, safety catch	1	
30	4B8768	DISTANCE PIECE, safety catch	1	
31	FPC100130	HOOK AND SPRING ASSY., late type	1	Replaces hook, spring and distance piece.
32	4B8769	CLEVIS PIN, safety catch	1	
33	CPS204	SPLIT PIN, safety catch	1	

Inner Wings

An inner wing complete assembly includes the inner wing and the inner A panel assembly. Please note that inner wings listed here may differ in detail (small brackets, weld nuts and piercings) from the originals on the car to be repaired. Minis using this design of inner wing (MkI and MkII Saloons, Travellers and Countrymans, plus of course all Vans and Pick Ups) were in production for nigh on twenty five years, during which time engine bay equipment positions changed many times. It would be impossible for us to stock and sell all the variations, so we advise you to inspect your old and new inner wings together and to transfer any necessary details you will require onto the new ones.

Also please note that some of the repair panels for inner wings are primarily intended for use on later Saloons with internally hinged doors. Thus while the overall profile of the panel is correct for use on earlier style inner wings, some details may need modification before fitment.

A very effective method of inner wing protection and wheel arch sealing is our front wheel arch liner kit (part no WAL001); for details, please see 'External Brightwork and Finishers' in the Somerford Mini catalogue.

34	14A8388	INNER WING COMPLETE ASSEMBLY, RH	1	
35	14A7900	INNER WING PANEL, without A panel, RH	1	
36	REPANO39	INNER WING REPAIR, front half, RH	1	
37	REPANI56	INNER WING REPAIR, front panel attachment, RH	1	Non-genuine.
38	REPANO68	INNER WING REPAIR, rear, full height, RH	1	Non-genuine; to late saloon specification. Will fit van and pick up.
39	REPANO29	INNER WING REPAIR, rear lower, RH	1	Non-genuine.
40	14A8346	INNER A PANEL ASSY, RH	1	Full height; includes gusset.
	14A8346P	INNER A PANEL ASSY, RH, non-genuine	1	3/4 height; excludes gusset.
41	14A8348	GUSSET, A panel to inner wing, RH	1	
42	14A7806	BRACKET, bonnet prop	1	
43	14A8389	INNER WING COMPLETE ASSEMBLY, LH	1	
44	14A7901	INNER WING PANEL, without A panel, LH	1	
45	CZH3065	INNER WING REPAIR, front half, LH	1	1971 approx. on.
46	HMP441023	INNER WING REPAIR, radiator slots, LH	1	
47	14A6498	COWLING ASSEMBLY, radiator	1	1961-71 approx.
48	REPANI55	INNER WING REPAIR, front panel attachment, LH	1	Non-genuine.
49	REPANO69	INNER WING REPAIR, rear, full height, LH	1	Non-genuine; to late saloon specification. Will fit van and pick up.
50	REPANO30	INNER WING REPAIR, rear lower, LH	1	Non-genuine.
51	14A8347	INNER A PANEL ASSY, LH	1	Full height; includes gusset.
	14A8347P	INNER A PANEL ASSY, LH, non-genuine	1	3/4 height; excludes gusset.
52	14A8349	GUSSET, A panel to inner wing, LH	1	
53	14A9085	PLATE ASSEMBLY, wheel arch sealing, RH	1	If fitted; includes rubber seal.
	14A9086	PLATE ASSEMBLY, wheel arch sealing, LH	1	If fitted; includes rubber seal.
54	27H3668M	SEAL, rubber	A/R	Supplied per metre.
55	RB608081	RIVET, seal to plate	8	
56	WA704061	WASHER, plain	8	
57	AB606031	SCREW, self tapping, plate to A panel	4	
58	PMZ308	SCREW, pan head, plate to inner wing	6	
59	PWZ103	WASHER, plain	6	
60	WL700101	WASHER, locking	6	
61	FNZ103	NUT	6	
Windscreen				
62	ALA5445	WINDSCREEN ASSY, with header rail	1	1961-67; includes boxing plates.
	ALA5655	WINDSCREEN ASSY, with header rail	1	1967-69; includes boxing plates.
	CZH3140	WINDSCREEN ASSY, with header rail	1	1969 on; includes boxing plates.
63	HMP441001	WINDSCREEN REPAIR, lower, full width	1	Pressed to 1969 on condition with additional wiper piercings.
64	REPANO33	WINDSCREEN REPAIR, lower corner, RH	1	Non-genuine.
65	REPANO34	WINDSCREEN REPAIR, lower corner, LH	1	Non-genuine.
66	ALA5444	HEADER RAIL ASSEMBLY	1	1961-67.
	ALA5790	HEADER RAIL ASSEMBLY	1	1967 on.
67	14A8015	TAPPED PLATE, interior mirror	1	Included in header rail assembly.
68	14A6683	BOXING PLATE, windscreen pillar, RH	1	
69	14A6684	BOXING PLATE, windscreen pillar, LH	1	